

FREE  
COPY

# WOOD MEETS COLOUR

TIPS FOR WOOD  
ENTHUSIASTS

.....  
**100 PER CENT FLAVOUR,  
0 PER CENT TOXIC**  
OSMO TOPOIL FOR THE KITCHEN  
.....

**WELLNESS FOR GARDEN DECKS**  
OSMO CLEANING AND CARE  
PRODUCTS MAKE GARDEN AREAS  
SHINE LIKE NEW AGAIN.  
.....

**GO TO BED!**  
DIY PROJECT:  
TWO-TONE BED DESK  
.....



# CONTENTS

## 04



### 100 PER CENT FLAVOUR, 0 PER CENT TOXIC

With Osmo Topoil, kitchen woodwork is protected without the use of harmful substances.



## 12

### IDEAS FOR THE HOME: FENG SHUI IN THE HALL

Discover how you can spread harmony and happiness in the entrance to your home.



## 08

### WELLNESS FOR GARDEN DECKS

Osmo cleaning and care products make garden areas shine like new.



## 18

### ULTRA VIOLET Boundless individuality



### CREDITS

**PUBLISHER**  
Osmo Holz und Color GmbH & Co. KG  
Affhüppen Esch 12 / 48231 Warendorf / Germany  
Phone +49 (0)2581/922-100  
Fax +49 (0)2581/922-200  
info@osmo.de, www.osmo.com

**EDITORIAL**  
Martina Bruffer  
PHOTOS  
Osmo, Shutterstock

© 2020 GB 1.0 Technical modifications reserved. Colour reproductions and illustrations are non-binding and without liability. Despite thorough inspection of brochure contents, printing mistakes cannot be completely avoided. In the interest of product development and improvement, we reserve the right to make changes.





10

DANCING ON POLYX®-OIL



14

GO TO BED!  
DIY project:  
Two-tone bed desk



20

WHY BEES BUZZ FOR OSMO



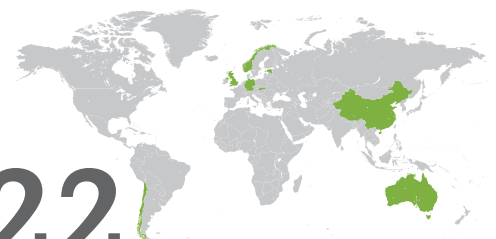
07

10 GOOD REASONS FOR WOOD FINISHES AND STAINS FROM OSMO



22

OSMO WORLDWIDE  
Made in Germany – Appreciated on six continents. Here is a small selection of projects in which Osmo products are used.



# 100 PER CENT FLAVOUR, 0 PER CENT TOXIC



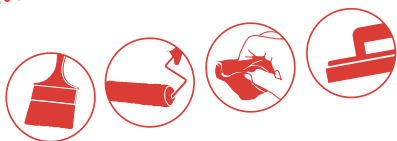
WITH OSMO TOPOIL,  
KITCHEN WOOD-  
WORK IS PROTECTED  
WITHOUT THE  
USE OF HARMFUL  
SUBSTANCES.

SIMPLE  
APPLICATION,  
OPTIMAL  
PROTECTION



## How to apply Osmo TopOil:

- > With Osmo Flat Brush or Microfibre Roller, apply TopOil thinly and evenly. Always work with the wood grain. For an especially beautiful furniture surface, we recommend using Osmo Hand Pad Holder with the Oil Finish Applicator Fleece.
- > Allow the coating to dry for about 8 to 10 hours. Ventilate well when drying.
- > Repeat the application 2 or 3 times with the Oil Finish Applicator Fleece or a lint-free cloth.
- > To renovate the surface, one coat is enough.





Hot frying grease sprays over the worktop as Toby carefully transfers a steak from one pan to another. Even when red wine lands on the dining room table, the hostess Tina just takes it all in her stride. "Ever since I treated all wood surfaces in the kitchen with Osmo TopOil, I don't go crazy over such things. One wipe and it's all gone," she reports smiling.

### MADE ESPECIALLY FOR SURFACES WITH CONTACT TO FOOD

The coating was developed specifically for worktops and furniture made of wood, cork and OSB that have direct contact to food. That makes it the ideal protection for wooden worktops in the kitchen, chopping boards made of wood and the dining room table. The oil deeply penetrates the wood; the waxes sit on the surface and form a protective layer. The coating guards wood against wear, dirt and stains, for example from cola, coffee or wine; water just simply beads up.

WHEN TINA, SANDRA AND TOBY COOK TOGETHER AT THEIR FAMILY WEEKENDS, THE SIBLINGS GIVE THE KITCHEN A REAL BEATING. LUCKILY ALL WOOD SURFACES ARE CLEANED IN A FLASH – THANKS TO TOPOIL, AN OIL AND WAX COATING FROM OSMO.

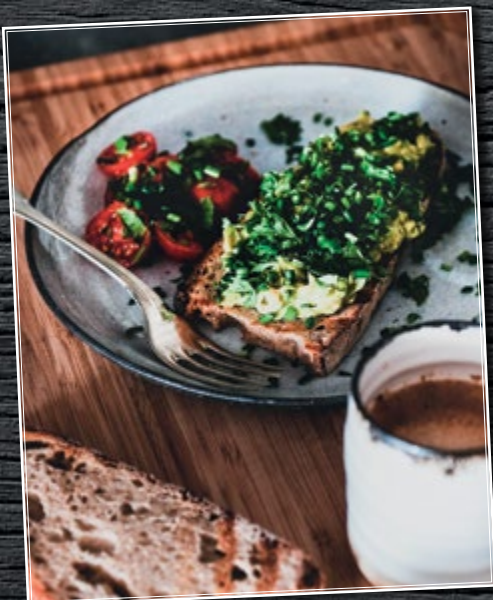


### GUARANTEED FOOD SAFE

When dry, the coating is completely safe for the whole family. This is confirmed by the certification according to the Euro Norm 1186, Part 5/14. This means that in direct contact with food, all TopOil surfaces will not release any substances that will alter the flavour, smell or look of food or that are bad for your health.

### THREE NEW COLOURS

Tina protects her kitchen wood surfaces with Top-Oil 3058 Clear matt. Besides this variation, there are three others currently available: 3028 Clear satin, 3061 Acacia and 3068 Natural. Due to the great success of this product, Osmo is introducing three new colours to the range: 3037 White, 3038 Terra and 3039 Graphite.



# WHEN IT NEEDS TO BE FOOD SAFE

**OSMO TOPOIL PROTECTS KITCHEN WORKTOPS AND CHILDREN'S TOYS WITHOUT THE USE OF HARMFUL SUBSTANCES.**

Wherever children play or food is processed, safe coatings and finishes are to be used – for example, Osmo TopOil. The oil-wax combination protects wood, cork and OSB surfaces against dirt and water. It is the only product of its kind – certified food safe.

## LOW MAINTENANCE:

Surfaces treated with Osmo TopOil can be cleaned easily with a damp cloth. It is best to avoid using conventional all-purpose cleaners. Use Osmo Spray Cleaner instead; it will not damage the protective oil layer.

## DURABLE:

Osmo TopOil protects surfaces not only against water, wear and dirt, but also against stains from coffee, wine and cola. Dents or tough stains can be simply sanded away and recoated with Osmo TopOil.

## COLOURFUL:

Up to now, Osmo TopOil has been available in the variations: Clear matt, Clear satin, Acacia and Natural. Now, three new colours are available: 3037 White, 3038 Terra and 3039 Graphite.

**3 NEW  
COLOURS**

## FOOD SAFE:

Osmo TopOil is certified to Euro Norm 1186 Part 5/14, which is normally used for food packaging.



# 10 GOOD REASONS FOR WOOD FINISHES AND STAINS FROM OSMO

## 1. TRUSTED QUALITY

Osmo enjoys over 140 years' experience in wood handling and finishing. With us, you can be certain that all products satisfy high demands on quality.

## 2. MADE IN GERMANY

Osmo is located in the heart of Germany: We research, develop and manufacture our products in Warendorf and Münster (NRW).

## 3. NATURAL OILS AND WAXES

Wood finishes from Osmo consist mainly of natural oils and waxes. From both an ecological and a craftsman's perspective – oils and waxes are the best for wood.

## 4. COATINGS THAT WILL NOT FLAKE

Only microporous wood finishes allow the wood to breathe. Wood finishes from Osmo will not crack, flake, peel or blister.

## 5. LESS WORK EFFORT NEEDED

No priming or sanding is needed for most applications. Also spot repairs are possible. Material and time consumption are noticeably lower.

## 6. LESS PRODUCT REQUIRED

Good hiding power comes from a high content of finely ground colour pigments. As a result, one or two coats without primer are enough.

## 7. SIMPLE APPLICATION

Creating wood finishes and care products with a simple and quick application – even for the hobby woodworker – is the focus of our product development. It should be easy for you to do.

## 8. NO HARMFUL SUBSTANCES

Interior finishes from Osmo are safe when dry. They have been largely approved for children's toys and sometimes as food safe.

## 9. WIDE COLOUR PALETTE

Osmo offer wood finishes in numerous coloured and clear variations as well as with different sheen options. Many of these coatings can be mixed and combined with each other. Your imagination has no limits.

## 10. SUSTAINABILITY

Osmo coatings are based on natural oils and waxes, and at the same time, they are also characterized by high durability.

WANT TO GET THE LOWDOWN ON THE PRODUCTS YOU USE IN THE HOME AND GARDEN? WITH US, YOU ARE ON THE SAFE SIDE – HERE ARE GOOD REASONS FOR CHOOSING OSMO COATINGS.



OSMO CLEANING AND CARE PRODUCTS MAKE GARDEN AREAS SHINE LIKE NEW AGAIN.

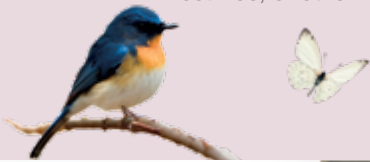


# WELLNESS FOR GARDEN DECKS



IT'S SPRING AND THE FIRST RAYS OF SUNLIGHT HAVE JUST COME OUT, YET THE DECK IS ALREADY BECKONING. BUT THE WINTER HAS LEFT ITS MARK. IF YOU ARE PLANNING YOUR SPRING CLEANING, THE CLEANING AND CARE PRODUCTS FROM OSMO ARE USEFUL HELPERS.

Is there anything better than relaxing on the garden deck? Breathing in fresh air, enjoying views of the garden and feeling natural wood underfoot. Timber decking looks great and is durable. With the right care, it will stay that way for years to come. No matter whether it's time for spring cleaning or a maintenance job in the middle of the barbecue season: If you are using the high quality cleaning products and Decking-Oils from Osmo, then you are doing everything right. These products have been developed specifically for the needs of decking and are easy to use with the tools and accessories from Osmo. Generally speaking: Before things can get started, the wood must be dry and frost-free, or otherwise the result will suffer.







## REMOVING OLD WOOD OILS AND STAINS

If the old coating, say Osmo Decking-Oil or another wood stain, has been partially weathered away, it is best to work with Osmo Paint Remover Gel. Apply liberally, keep the surface damp during the 60 minutes' reaction time, and finally scrub the surface lengthways with plenty of clear water.

**Our recommendation:** Are you planning to recoat the wood surface after the treatment? Then, you should first neutralize the dried surface by treating it with Osmo Wood Reviver Power-Gel.



## ROUTINE UPKEEP

Surfaces exposed to wind and weather require a little extra care. Dirt, grime and tough stains are best removed with water and Osmo Decking Cleaner. If oiled surfaces have dents and scratches, for example from sand or pebbles, they should also be thoroughly cleaned and recoated.

**Did you know that to remove dirt and stains in one certain area, you do not have to clean and recoat your whole deck? Osmo products make spot cleaning and repairs possible.**



## SPRING CLEANING

Treat your garden deck to an anti-aging treatment: First clean the whole surface thoroughly with an Osmo Decking Cleaning Brush and a mixture of water and Osmo Decking Cleaner. Green growth is best removed with Osmo Gard Clean. Allow the decking to dry thoroughly. When the surface has dried, apply one coat of the same wood finish that was last used. Is the surface too slippery? After the coating dries, add a thin coat of Osmo Anti-Slip Decking Oil.

**Our tip:** Well protected surfaces that are not used very often have to be recoated less frequently.



## INTENSIVE CLEANING AND RESTAURATION

Does your timber decking have a few years under its belt? Has it aged and turned grey over time through the natural effects of rain and UV light? Bring its natural wood colour back to light with Osmo Wood Reviver Power-Gel. Simply apply the gel with an Osmo Decking Cleaning Brush along the wood grain, wait 20 minutes and rinse with water – done!

**Our tip:** The best results are achieved with the Osmo Decking and Flooring Cleaning Machine. The counter-rotating brushes clean more intensively, and at the same time, they sweep up loose dirt and grime.



## HANDS OFF ...

**Rain and frost:** A cold wet day is not a good time to clean and maintain your decking. In such weather, the cleaning products cannot achieve the desired effect, and oils will not be absorbed into wet wood.

**Pressure washers:** They blast away the top layer, and in turn, the durability of the wood suffers. Plus, the wood surface gets rougher, and as a result, splitters may end up in feet.

**Household cleaners:** Acids in these cleaners damage the wood structure. It becomes porous and loses resistance.

**Toxic substances:** To remove grey patina on decking, there are many products available that are often based on toxic substances. They not only harm the environment, but also your garden deck.

# DANCING ON POLYX<sup>®</sup>-OIL



**FOR PROFESSIONAL DANCERS,  
FLOOR CONDITIONS CAN  
MEAN VICTORY OR DEFEAT IN  
A COMPETITION. HOWEVER  
FOR AMATEUR DANCERS, IT  
IS JUST AS IMPORTANT THAT  
DANCEFLOORS ARE NEITHER  
TOO SMOOTH NOR TOO ROUGH.  
EVERYONE SHOULD BE ABLE TO  
MOVE FREELY AND SECURELY.**



*Application videos can be  
found at [www.osmo.com](http://www.osmo.com)  
or on YouTube*

**Polyx®-Oil Original  
in four gloss levels:**

- 3011 Clear Glossy,
- 3032 Clear Satin,
- 3065 Clear Semi-Matt,
- 3062 Clear Matt



At Tanz- und Turnierclub München (TTC), one of Germany's most successful dancesport clubs, special attention is given to flooring conditions. When the club moved into a new dance studio in March 2017, they sought consultation in floor coverings and surfaces. For their amateur and professional dancers, only the best would do, and so the Oak sprung floor was treated with Osmo Polyx®-Oil Original.

## PERFECT FLOORING

"The flooring is perfect," says German ballroom dance champion Anton Skuratov, who only had praise for the floors in the new studio. "They are not too slippery and not too grippy, and everywhere it is the same." Andrzej Cibis, well-known personality from the German television programme "Let's Dance", agrees with him. Indeed Latin dancers prefer somewhat rougher floors than ballroom dancers. However, provisions for such preferences can be made by dancers through the choice and the care of their shoe soles – but not with alternating smooth and rough patches on the floor.

"With Polyx®-Oil, we can provide our dancers with a dancefloor that is overall uniformly smooth, and that will last for a long time," explains Club President Michael Schülke. In traditional methods, wax is scattered and worked into wooden flooring. In very little time, a waxed floor has areas that are too smooth and others that are too rough. Plus, the wax gets stuck in the soles of the dancers' shoes and always needs to be brushed out again.

With Osmo Polyx®-Oil, this does not happen. The oil penetrates deep into the wood and holds the wax in where it belongs: on the floor. Even when dancers spin round and round on the one place, the sole stays clean and free of wax.

## CARE AND DURABILITY

### SO THE JOYS OF DANCING LAST AND LAST

The dance hall is routinely swept and occasionally mopped with Osmo Wash and Care. Although street shoes are not allowed in the dance hall, small dents can still happen. These can be simply sanded away and repaired on the spot. To restore the surface and to remove tough stains, Osmo Liquid Wax Cleaner is used. The surface must first be refinished with Osmo Polyx®-Oil, when the dance floor shows signs of wear. This very thin renovation coat is then applied either with the Floor Brush or Microfibre Roller from Osmo.

## FOR LATIN, BALLROOM, BREAK DANCE AND BALLET

The even surface reduces the risk of injury and makes dancing easier for dancers of all disciplines. Latin dancers find the much needed grip on high heels; ballroom couples glide over the dancefloor effortlessly. Break dancers feel just as safe performing their acrobatic moves on the floor as ballet children and line dancers do.

"Of course, the flooring faces a lot of strain," says Club President Schülke. "Serious sport is being done here. Day after day the flooring has to absorb the shock of jumps as well as withstand turns and high heels. Even after many months of intensive use, Polyx®-Oil has completely proven its worth. Our dancers are ecstatic."



# **IDEAS FOR THE HOME: FENG SHUI IN THE HALL**

**DISCOVER HOW YOU CAN SPREAD HARMONY AND HAPPINESS  
IN THE ENTRANCE TO YOUR HOME**



**3. Add structure to long corridors.** Long corridors give us a feeling of uneasiness. Qi that has just come through the front door accelerates too much and flies right back out again. So, break up the view and slow down Qi with little tricks: place plants, maybe a chair, pictures or a mirror along the long walls. Also with light and colour, you can visually divide up a long corridor.

**4. Include the floor in your design plans.** In our field of view, the floor is more predominate than the ceiling and walls. Design it with purpose. Especially well suited are cosy materials, such as wood planks. In long halls, small colourful rugs can add accents and give structure to a long set of doors. Keep in mind: Qi goes where you look, so create a focal point for your eye to rest upon.

## A SENSE FOR SPACE AND DESIGN

Some rooms make us feel instantly well, while others make us want to run right back out of them. Feng shui is an ancient Chinese teaching based on these human instincts for space. For example, in the hall: Upon entering a home, it is decided whether you or your guests feel welcome. Or as it is put in feng shui: Whether positive energy – called Qi – can flow inside and a feeling of harmony and happiness can spread.

**1. Clear away the mess.** Chaos is not good for us. Make sure that the first things you see when you arrive at home are not the jackets, bags and boots. The easiest method is a closed wardrobe. Another idea: A trunk offers storage space and also serves as a place to sit and put on shoes.

**2. Bright light, friendly colours.** Good lighting activates Qi. Or in other words: No-one likes to go down a dark corridor. Plus colours in the entry should be kept light: white and beige, perhaps accented with soft pastel colours.



*1 x coat:  
transparent colour*



*2 x coats:  
intense colour*



## OSMO WOOD WAX FINISH IN LIGHT COLOURS FOR FLOORING AND FURNITURE:



*3186 White Matt*



*3188 Snow*



*3172 Silk*



*3181 Pebble*



*3132 Grey Beige*

# GO TO BED!

DIY PROJECT: TWO-TONE BED DESK



# FOR SUSPENSEFUL NOVELS, LAPTOPS OR BREAKFAST IN BED: WITH THIS UNIQUE BED DESK, YOU HAVE EVERYTHING IN REACH FOR AN ENJOYABLE, RAINY SUNDAY MORNING.

## You need:

- > 2 tabletops 55 × 50 cm  
Osmo Hobby Edge-Glued Panels Spruce 18 mm
- > 2 table sides 95 × 80 cm  
Osmo Hobby Edge-Glued Panels Spruce 28 mm
- > 4 galvanized threaded rods M10, length 57 cm
- > 4 aluminium pipes 16 × 1.0 mm length 50 cm
- > 8 cap nuts M10 and washers
- > 12 wood dowels 6/30 mm wood glue
- > 4 castor wheels, height 50 mm
- > 16 screws approx. 4 × 16 mm

## Tools:

Pencil, ruler, jigsaw with blades for metal and wood, sander or sanding block and sandpaper medium and fine, drilling machine and wood drill bits, stop collar or tape as well as dowelling jig and rubber hammer

## For the surface design:

Wire brush drill attachment, stirring stick, Osmo Roller and Brush Set and a rubber scraper

## For the surface:

Wood Wax Finish 3125 Blue  
Wood Wax Finish 3105 Yellow  
Wood Wax Finish 3172 Silk



## HOW IT'S DONE:



1. To create the two-tone design on the tabletops texturize the edge-glued panel with a drilling machine and a wire brush attachment. Gently glide the wire brush over the wood surface in the same direction as the wood grain. The softer, lighter-coloured early wood is then removed, the harder, darker late wood stays. The wood grain now stands out noticeably.



2. Without any primer, Osmo Wood Wax Finish is applied to the surface. Before applying, stir well so that all colour pigments are mixed into the finish. Pour the estimated application amount into the roller tray.



3. For our example of the two-tone technique, you need Osmo Wood Wax Finish 3125 Blue as the base colour and 3105 Yellow as the second colour. Osmo Wood Wax Finish makes the wood surface water and dirt repellent. When dry, the finish is completely safe for humans, animals and plants. *Tip: The Osmo Roller and Brush Set comes with three disposable rollers. Use a different roller for each colour.*



4. Thinly apply the base colour to all sides of the boards with Osmo Flat Brush or Microfibre Roller. Always work with the wood grain and spread well.

5. After drying for at least 24 hours, the surface can be coated with the second colour.

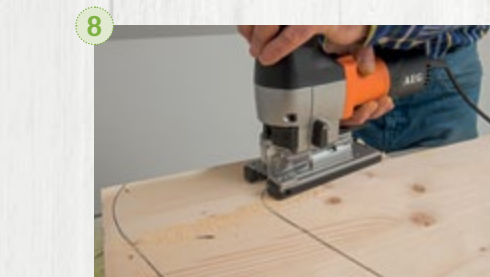




6. After thoroughly stirring, pour Wood Wax Finish in the second colour into the replaced roller tray insert and coat the surfaces like the base colour.



7. Now you have to act fast: Before the second colour dries, wipe away the second coat with the rubber scraper. Make sure to clean the scraper between laps. The base colour is now visible on the raised surfaces and second colour stays in the grooves. Allow the finish to dry for another 24 hours.



8. The table sides are made from 28 mm thick Osmo Hobby Edge-Glued Panels in Spruce. Trace the contour onto the panels and cut out the sides with the jigsaw. The height may have to be adjusted to your bed height. *Tip: Use the dimensions in the drawing to make a cardboard cut-out of the table sides. Test the cut-out on your bed, and if necessary, make adjustments.*



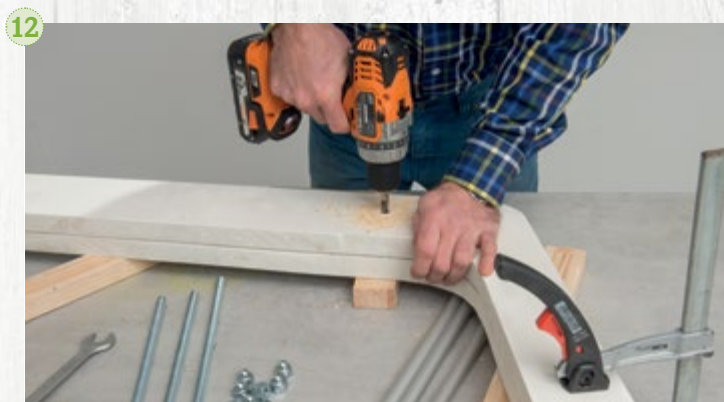
9. After cutting the panels, round off the edges with a sander or by hand and smooth surface with medium and fine grit sandpaper.



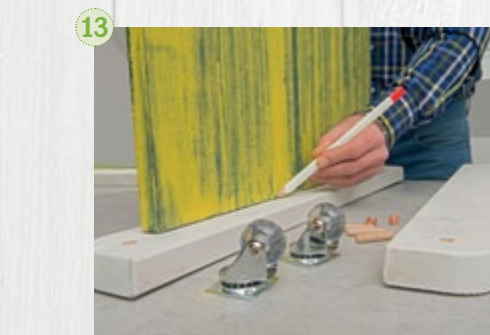
10. So the whole furniture piece does not get too colourful, a more subtle colour is recommended for the sides; here Osmo Wood-Wax Finish 3172 Silk was used. Open the finish, stir well and pour into the tray insert. Spread evenly onto the table sides with Osmo Microfibre Roller or Osmo Flat Brush.



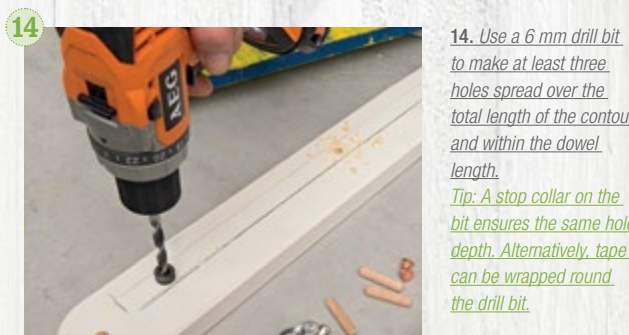
11. Threaded rods give the table sides more stability. Fix these in a vice or the clamping jaws of your workbench and shorten them to the appropriate length. Cut the four aluminium pipes to a length of 50 cm; these are used as covers for the threaded rods.



12. To ensure the drill holes for the threaded rods are aligned, place both table sides exactly over each other, fix with clamps and then drill the holes. To prevent your workbench from being drilled into, place a wood block under the table sides.



13. Dowels are used to fix the tabletops into the table sides. To position them, trace the tabletop contour onto inner sides of the table sides. The distance to the ends is the same on both sides, and the top edge of the sides should stand at least 1 cm over the top edge of the tabletops.



14. Use a 6 mm drill bit to make at least three holes spread over the total length of the contour and within the dowel length. *Tip: A stop collar on the bit ensures the same hole depth. Alternatively, tape can be wrapped round the drill bit.*



15



15. To mark the counter drill holes in the tabletop edge, place the dowelling jig in the holes, align the panel with the traced contour and press down. Remove the panel and make the counter drill holes. After drilling all holes, glue the dowels into the sides and place the tabletops between the sides. Fix everything with clamps while the glue sets.

16



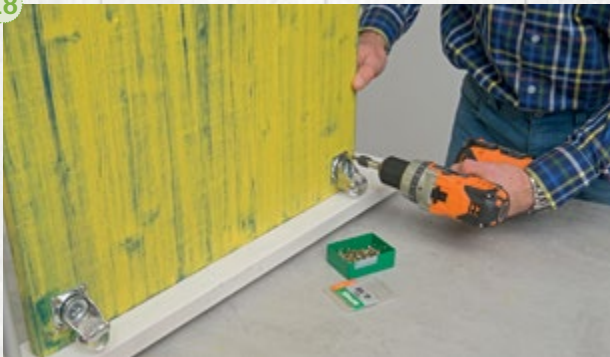
16. Push the threaded rods through both table sides. Do not forget the aluminium pipes in the middle. If the rod gets jammed in the opposite table side, use a rubber hammer to help the rod through.

17



17. Screw cap nuts onto the protruding ends.  
*Tip: Use washers to stop the cap nuts from pressing into the wood.*

18

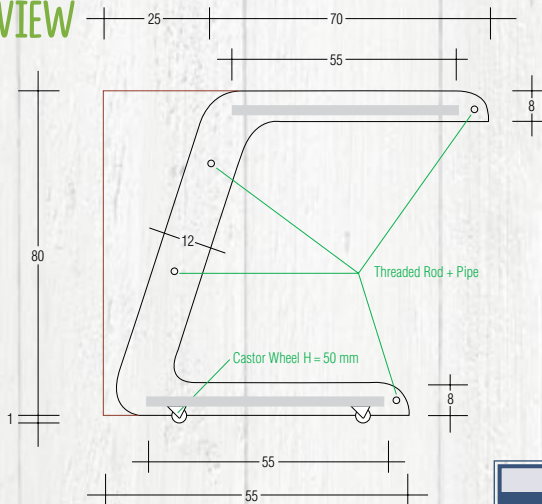


18. Castor wheels give your bed desk mobility. These are fixed with screws in the corners of the bottom tabletop at a distance of approx. 1 cm to the sides.

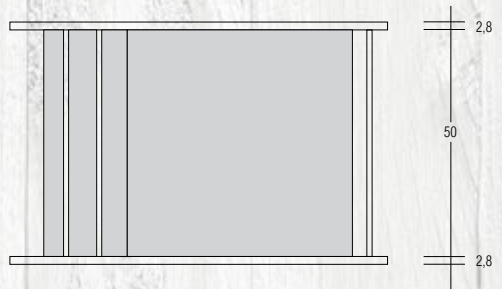


DONE!

SIDE VIEW



TOP VIEW



OSMO TIP

High wear surfaces should be protected against abrasion, moisture and dirt with an additional coat of a clear Osmo Polyx®-Oil or Osmo TopOil.



# ULTRA VIOLET

## BOUNDLESS INDIVIDUALITY

Colours can do real magic. They can make a room seem larger or smaller, brighter or darker, cooler or warmer. Colours can brighten our spirits or dampen them, calm us down or wake us up. Give your creativity room to grow and create your own individual style in your home.

### MYSTIC PURPLE

Ultra Violet is a deep, dark shade of purple. The colour resembles the endless depths of the universe and has a rich and warm feeling. Ultra Violet is an extremely expressive colour that should be used in good doses. On too large areas, it can dominate and overwhelm a room. As a contrasting colour to lighter or natural colours, Ultra Violet can add an exciting element.

### COUNTRY COLOUR ULTRA VIOLET: A UNIVERSAL TALENT

With Osmo Country Colour Ultra Violet as a mixed-to-order colour, you can coat almost every wood surface in your home and garden. The most important application areas for this weatherproof oil-based finish from Osmo are cladding, privacy fencing and garden furniture. Since the finish is completely safe when dry, it can also be used in indoor areas without worry. Have an extra can of finish left over? Perhaps some interior wood pieces will look good in Ultra Violet. Maybe the drawer fronts in that old cabinet, the old rocking chair or those shelves.

#### Wood looks great with Ultra Violet

How about a comfy arm chair in a striking colour? With new upholstery, your beloved treasures get a new lease of life. Ultra Violet as a woven fabric, maybe even velvet – Give it a go.



#### Osmo mixed to order

Starting from 2.5 litres, Country Colour Ultra Violet can be mixed to order from your Osmo dealer as the Pantone colour 18 – 3838.



**Pallets of a different colour**  
Furniture Pallets in Ultra Violet catch your eye, but they still have their casual improvised character.

**New inspiration: on-trend colours**  
Of course, your favourite colour can only be chosen by you. Still, style trends can be a source of inspiration or give impulse to try something new. But, there can be no restraints on your own taste.  
  
And nevertheless, designers from around the world impatiently wait for the unveiling of the Colour of the Year at the Pantone Color Institute in the US. The Pantone designers pay close attention to developments in the textile and furniture industries, but at the same time they also take social attitudes and cultural influences into consideration. So, the Colour of the Year is much more than merely a fashion tip. It is also an expression of today's dreams and desires.

**These colours suit Ultra Violet best**

Ultra Violet can be combined with a multitude of colours. Especially with wood tones, soft pastel colours as well as shades of green and blue. But also white and black add an elegant touch. It's worth giving it a try.



**A STRONGER CONTRAST: ULTRA VIOLET AND GREY**

A further trend in wood and garden design is Grey. Wood naturally develops a grey patina with time; however, this natural greying process happens unevenly. So if a stunning even grey from the very beginning is what you are after, treat the wood with Osmo Natural Oil Woodstain Effect. It is available in three exciting silver colours: Agate-Silver, Graphite-Silver and Onyx-Silver. This looks great with Ultra Violet. In contrast to grey, you can also coat single profiles or selected areas in Ultra Violet. This creates a contemporary and vibrant look.

**Wow the neighbours**

... with a fence in Ultra Violet. This really suits the green of the lawn, trees and plants. Bring a splash of colour into the game and become a trendsetter.



# WHY BEES BUZZ FOR OSMO



**osmo**  
**One Coat Only**  
**HS Plus**  
1 coat - optimum protection  
Water-based on natural oils  
Anti-microbial - water-repellent  
Does not crack, flake, peel or blister  
Biocide-free - without preservative agents  
Highest coverage

**osmo**  
**Country Colour** High Solid  
Natural Oil paint for enhancing your wood  
Long-term protection  
Satin-matt - microporous - water-repellent  
Does not crack, flake, peel or blister  
Biocide-free - without preservatives  
Highest coverage

**osmo**  
**Country Colour**  
Natural Oil paint for enhancing your wood  
Long-term protection  
Satin-matt - microporous - water-repellent  
Does not crack, flake, peel or blister  
Biocide-free - without preservatives  
Highest coverage

## BUSY LITTLE HELPERS

Without bees, not only would we humans have to do without honey, but there would also hardly be any strawberries and oranges, broccoli and cucumbers, apples and soybeans. About two thirds of our crops are pollinated by bees, and about 90 per cent of fruit trees. Alone in Germany, they carry out free pollinating work valued at 2 billion euros each year.

But, bees are not doing well. This results from the use of bee-harming neurotoxins in insecticides. This is why the EU has forbidden the use of three neonicotinoids. Meanwhile there are many people who are helping bees by building nesting boxes for wild bees and by planting early blossoming bushes and flowers.

## BEE-FRIENDLY COATINGS

An important contribution to bee conservation is made by beekeepers. To farm honey, they set up beehives to house their bees. These beehives are traditionally made of wood and must be protected against rot through a wood coating – of course, a bee-friendly one without insecticides.

For the protection of their hives, beekeepers often turn to Osmo Country Colour or Osmo One Coat Only HS<sup>Plus</sup>. The natural oils penetrate the wood and keep it elastic. Moisture can be released, so no mould will develop under the coating. Pigments in the coating

are approved for the food industry, and no harmful aromatic compounds and preservatives are used – to create a place where bees love to live.

## GOOD TO KNOW: CAN BEES SEE COLOUR?

Colourful beehives dot the landscape. But, do bees actually see colour? Yes, but not the same way as we do. Bees can see UV light; in exchange, they cannot see red. What we see as red is black to them; our yellow is their purple. Only blue looks pretty much the same to both bees and humans. When bees want to make their way back to the hive, colour only plays a marginal role. They orient themselves first and foremost by recognizing shapes and landscapes, and after that the colour of their home.



# OSMO WORLDWIDE

MADE IN GERMANY – APPRECIATED ON SIX CONTINENTS. HERE IS A SMALL SELECTION OF PROJECTS IN WHICH OSMO PRODUCTS ARE USED.



## England – Olympic Park Aquatics Centre

For the interior as well as timber roof soffits and cladding, Osmo developed a bespoke colour for a silver-grey effect.



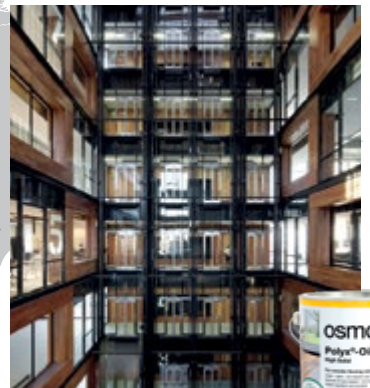
## Germany – Indoor Play Centre Kettler Hof

In this indoor play centre, Osmo Polyx®-Oil Original and Polyx®-Oil Tints protect natural wood flooring against everyday wear and tear.



## SIMPLY THE BEST FOR WOOD. EVERYWHERE.

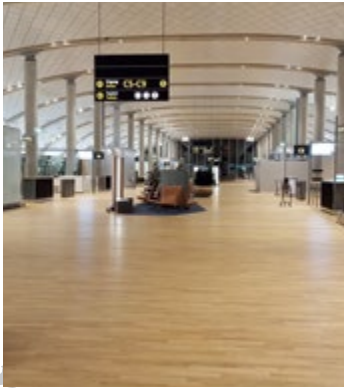
There are many things that differentiate countries around the world: the people speak English, Russian or Japanese, or eat rice, potatoes or sweetcorn. However, some things are the same everywhere, for example the appreciation of wood in houses and furniture or as cladding and flooring in temples and at airports. And everywhere, wood needs protection, which allows it to breathe and preserves its natural properties. Best made of natural waxes and oils. Best from Osmo.



## Chile – UC Innovation Center

The atrium of the award-winning UC Innovation Center in Santiago, Chile was finished with two coats of Polyx®-Oil Original 3032 Clear Satin.





**Norway – Oslo Airport**

At Oslo Airport, Polyx®-Oil Original was applied in order to protect the surface of the Oak strip flooring.



**Estonia – Tallinn Concert Hall**

The flooring in this beautiful concert hall in Tallinn was first coated with Wood Wax Finish Clear Extra Thin and then with Polyx®-Oil Original.



**China – Harbin Grand Theatre**

The Harbin Grand Theatre is the most important cultural amenity in Heilongjiang Province, China. Thanks to Osmo, all the interior wall panels and ceiling are optimally protected with Osmo Polyx®-Oil Original 3062 Clear Matt.



**Slovakia – Kempinski Grand Hotel**

The front of this magnificent hotel in the High Tatras was decorated with our Country Colour. The surface finish is especially weatherproof, so the wood is optimally protected against the extreme weather conditions high up in the mountains.



**Australia – Nando's**

The wooden floors as well as wall and ceiling panelling at this Nando's restaurant near Perth were treated with Polyx®-Oil Original 3032.





Osmo Holz und Color GmbH & Co. KG  
Affhüppen Esch 12 / 48231 Warendorf / Germany  
Phone +49 (0)2581 / 922-100  
Fax +49 (0)2581 / 922-200  
[info@osmo.de](mailto:info@osmo.de), [www.osmo.com](http://www.osmo.com)

osmo<sup>®</sup> 